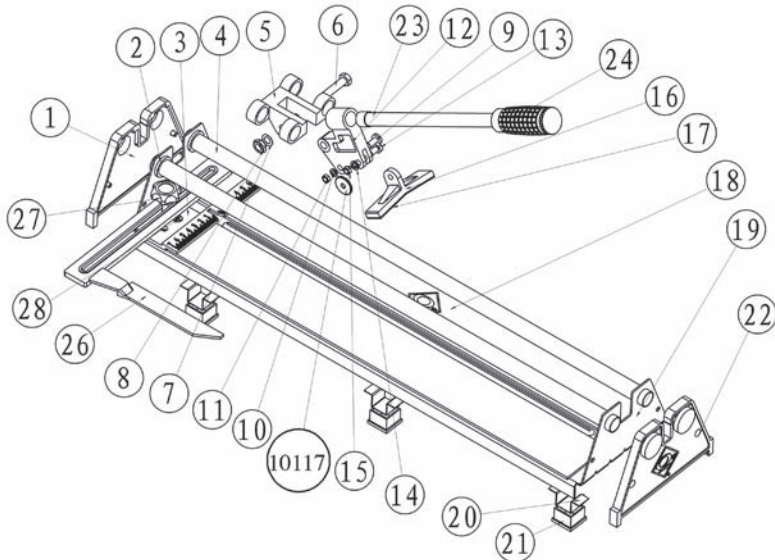


## 10220 PARTS LIST



No.	Description	Qty
10220-1	Frame Cover	2
10220-2	Limit Stop Collar	2
10220-3	Ruler	1
10220-4	Guide Bar	2
10220-5	Support	1
10220-6	M8 Bolt	1
10220-7	8 mm Plain Washer	1
10220-8	M8 Nut	1
10220-9	M5 Bolt	1
10220-10	5 mm Lock Washer	1
10220-11	M5 Nut	1
10220-12	Cutting Wheel Holder	1
10220-13	M6 Bolt	1
10220-14	6 mm Lock Washer	1

No.	Description	Qty
10220-15	M6 Nut	1
10220-16	Breaker Bar	1
10220-17	Rubber Pad	1
10220-18	Pad	2
10220-19	Base	1
10220-20	Supporting Feet	6
10220-21	Feet Cover	6
10220-22	5 mm Rivet	4
10220-23	Handle Bar	1
10220-24	Handle	1
10117	Cutting Wheel	1
10220-26	Square	1
10220-27	Screw	1
10220-28	M6 Screw	2

## GENERAL MAINTENANCE

- Oil should not be used on the 10220 OEP Tile Cutter. Use of oil will cause eventual gumming and sticking of the movable parts as the oil combines with dirt and ceramic tile dust.
- Wear is normal in the chrome plated rails and can be evenly distributed by occasional rotation of each of the two rails.
- The only part routinely needing replacement is the carbide scoring wheel.