

EXTRA CUTTING WHEEL STORAGE

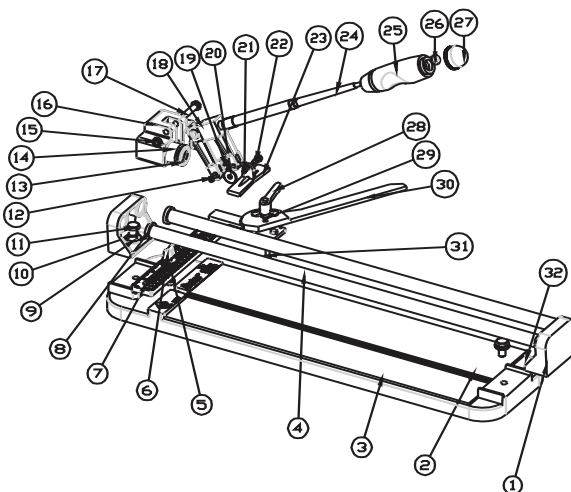
The 20 in. Brutus Tile Cutter features a convenient storage compartment in the handle, for spare 7/8 in. cutting wheels (Fig 6). Simply unscrew the handle end to open.



**CUTTING
WHEEL STORAGE**

FIG. 6

PARTS LIST



1	support
2	sponge cushion 2
3	sponge cushion 1
4	sliding bar
5	flat washer
6	guide knob
7	ruler
8	buffer circle
9	flat washer
10	spring washer
11	bolt
12	nut
13	bearing cover
14	bearing
15	nut
16	slide
17	bolt
18	connector
19	bolt
20	cutting wheel
21	nut
22	bolt
23	breaker foot
24	push bar
25	handle base
26	flange nut
27	handle cover
28	angle guide lever
29	flat washer
30	adjustable angle guide
31	nut
32	base

GENERAL MAINTENANCE

1. Oil should not be used on the 10552 Brutus Tile Cutter. Use of oil will cause eventual gumming and sticking of the movable parts as the oil combines with dirt and ceramic tile dust.
2. Wear is normal in the chrome plated rails and can be evenly distributed by occasional rotation of each of the two rails. For cutters with hex bolts holding the rails, loosen each hex bolt and slightly rotate the rails. Retighten the hex bolts when finished.
3. The only part routinely needing replacement is the carbide scoring wheel. All other parts are also available.