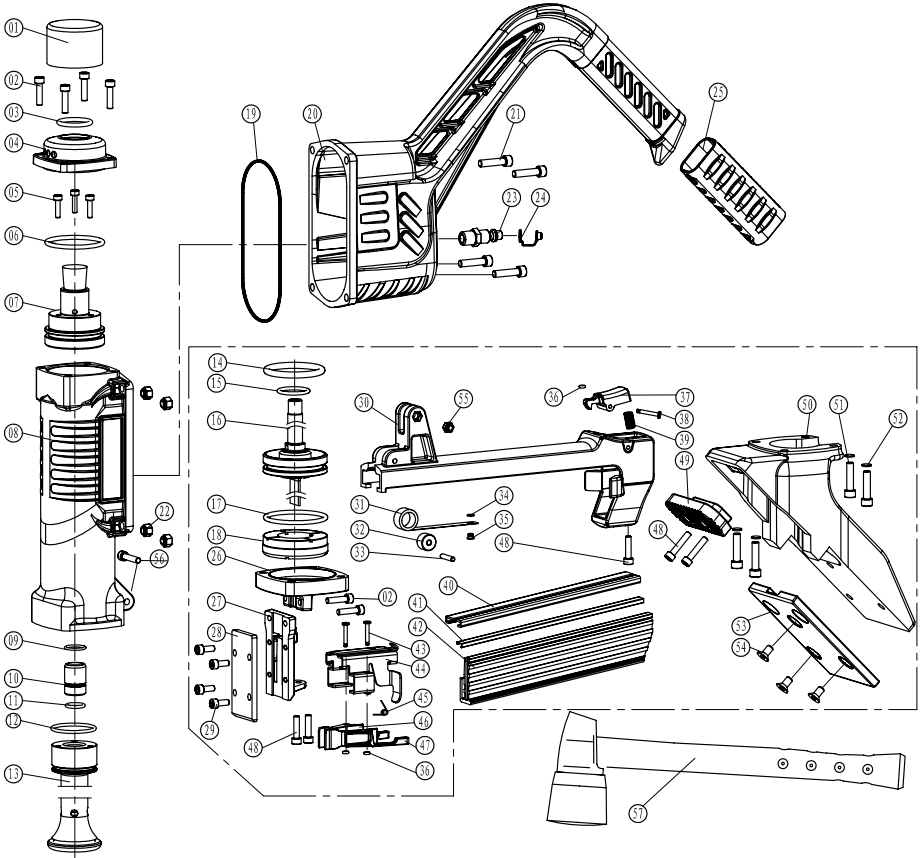


OPERATION

Note:

The information contained in this manual is designed to assist you in the safe operation of the Stapler & Nailer. Some illustrations in this manual may show details or attachments that differ from those on your Stapler & Nailer.

465SLT SCHEMATIC



NO.	Description	Qty	NO.	Description	Qty	NO.	Description	Qty	NO.	Description	Qty
1	Whack Cap	1	16	Piston Driver	1	31	Spring II	1	46	Right Pusher	1
2	Bolt M5*20	6	17	O-ring 50*3.55	1	32	Spring Core	1	47	Left Pusher	1
3	O-ring 25*3.55	1	18	Bumper	1	33	Roll Pin A4*20	1	48	Bolt M5*16	5
4	Air Deflector	1	19	Sealing Washer	1	34	E-ring d=3	1	49	Protective Pad	1
5	Bolt M4*16	3	20	Handle	1	35	Spring Pin	1	50	Base	1
6	O-ring 46.2*3.55	1	21	Bolt M6*25	4	36	O-ring 1.7*2	3	51	Spring Washer 6	4
7	Piston Seat	1	22	Nylock Nut M6	4	37	Latch	1	52	Bolt M6*40	4
8	Gun Body	1	23	Air Inlet Plug	1	38	Retainer-Ring	1	53	Spacer	1
9	O-ring 15.6*1.8	1	24	Protecting Bushing	1	39	Compressed Spring	1	54	Bolt M6*12	3
10	Sealing Screw	1	25	Handle Sleeve	1	40	Pusher Seat Shelf	1	55	Nylock Nut M5	1
11	O-ring 12.8*1.8	1	26	Cylinder Seat	1	41	Driver Nail Bar	1	56	Bolt M5*25	1
12	O-ring 34.5*2.65	1	27	Nail Head	1	42	Magazine	1	57	Hammer	1
13	Piston Sleeve	1	28	Driver Guide	1	43	Pin	2			
14	O-ring 32*4.5	1	29	Bolt M5*10	4	44	Pusher Seat	1			
15	O-ring 12.8*2.5	1	30	Magazine Mantle	1	45	Pusher Spring	2			