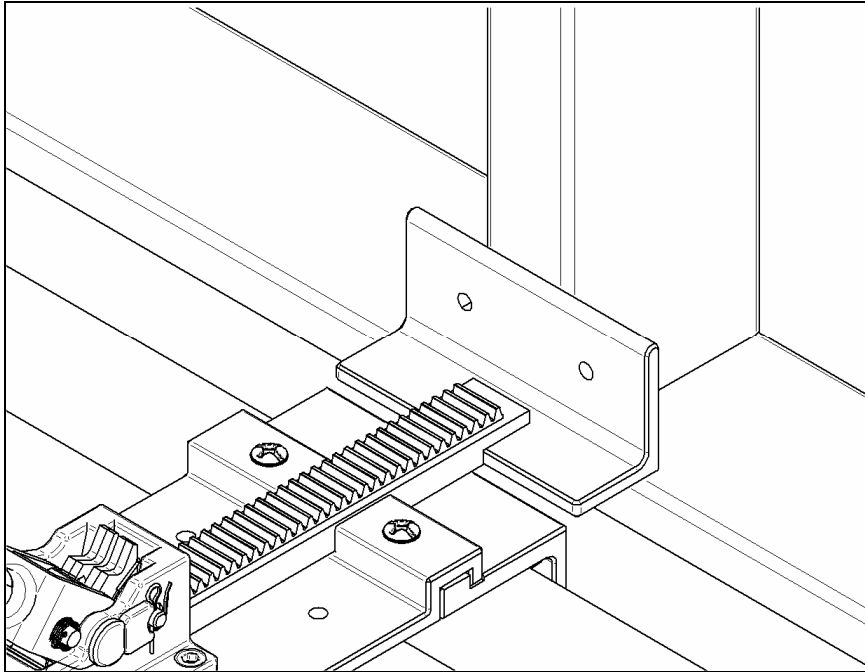


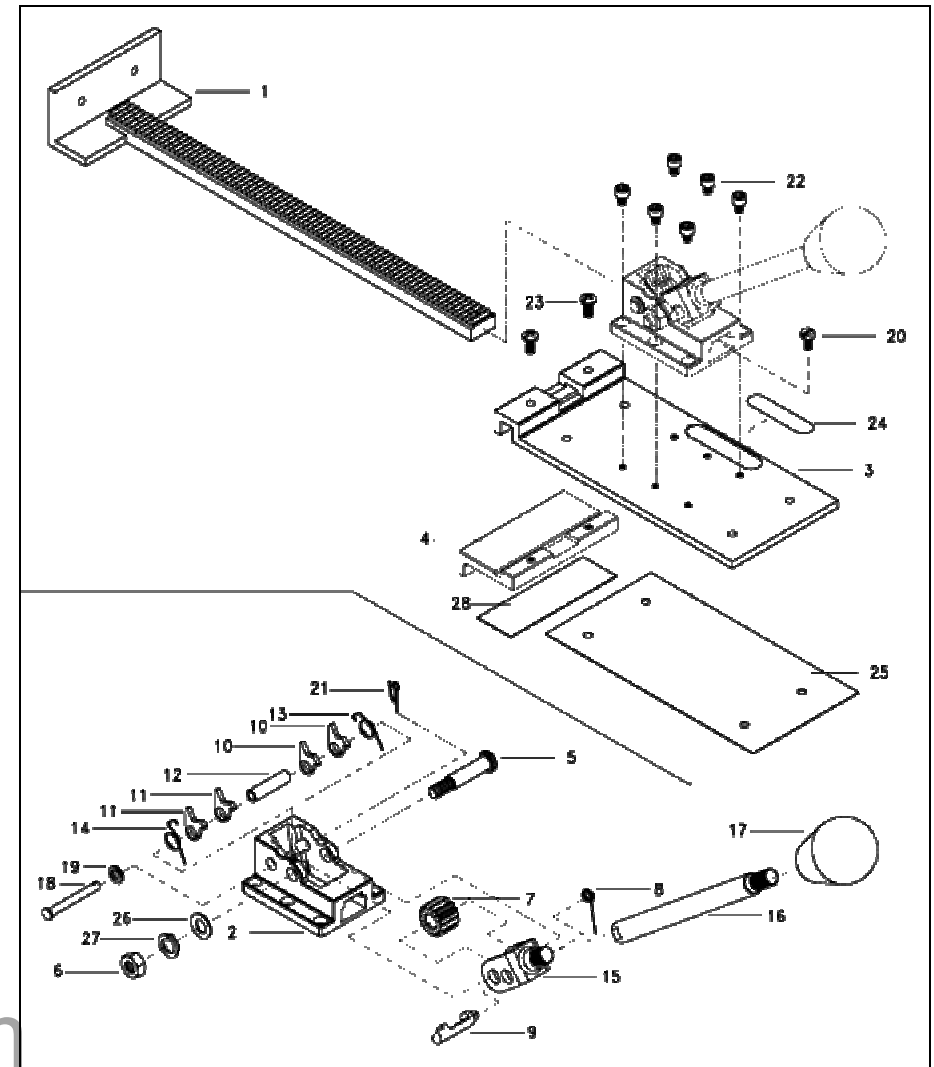
OPERATING INSTRUCTIONS

At Stud Locations:

Position the PortaJack-Pro floor tightening jack in line with wall studs. Operate lever handle to ratchet faceplate into contact with the wall stud. Continue to ratchet until flooring draws up to desired position. PortaJack-Pro can be left in place while you nail down the flooring strip.



EXPLODED VIEW – PORTA-JACK PRO



QEPParts.com

888-634-4289

An iBuy Stores Company

Note: The numbers used in this illustration are for reference only. Please use the part number specified on the Bill of Materials when placing an order for replacement parts.

BILL OF MATERIALS – PORTA-JACK PRO

Bill of Materials

Ref. #	Part No.	Qty	Description
1	47101	1	RACK / RAM ASSEMBLY
2	47102	1	HOUSING
3	47103	1	BASE
4	47104	1	SHOE
5	47105	1	GEAR SHAFT
6	47106	1	GEAR SHAFT NUT
7	47107	1	GEAR
8	47108	1	RATCHET SPRING
9	47109	1	RATCHET SHAFT
10	47110	2	RH PAWL #1
11	47111	2	LH PAWL #2
12	47112	1	PAWL BUSHING
13	47113	1	RH PAWL SPRING #1
14	47114	1	LH PAWL SPRING #2
15	47115	1	HANDLE YOKE
16	47116	1	HANDLE SHAFT
17	47117	1	KNOB
18	47118	1	PAWL CLEVIS PIN
19	47119	1	WASHER
20	47120	1	STOP SCREW (1/4-20 X 1/2" ROUND HEAD)
21	47121	1	COTTER PIN
22	47122	6	M6-1.0 X 8MM SHCS
23	47123	2	M6-1.0 X 15MM PHILLIPS HEAD SCREWS
24	47124	1	LABEL
25	47125	1	BASE PAD - SELF ADHESIVE, NON-MARRING
28	47128	1	SHOE PAD - SELF ADHESIVE, NON-MARRING

Note: The reference numbers used in this Bill of Materials are for reference only. Please use the appropriate part number when placing an order for replacement parts.

QEPParts.com
888-634-4289
An iBuy Stores Company

Between Stud Locations:

Option 1 – Place a length of 2x4 or similar support board in front of the ram of the PortaJack-Pro and attach it using wood screws through the two holes provided. Then place PortaJack-Pro in position between the wall studs for support and ratchet until contact is made. To release the PortaJack-Pro, simply push the handle to full forward position releasing the pawls contact.

Option 2 – Place one or two flooring strips between the wall studs for support. Then place PortaJack-Pro in position and ratchet until contact is made with the support strips. To release the PortaJack-Pro, simply push the handle to full forward position releasing the pawls contact.

